



# Installation instructions for the MFD28 in your Honda Civic FK8

## Beforehand

Thank you for purchasing your CANchecked display for the Honda Civic.

During the development of the product, attention was paid to the highest accuracy of fit and quality. The display has been mounted with this installation guide by several test persons and continuously improved, so that you have no problems with the conversion.

If you have feedback, criticism, or change requests for us, please send us an e-mail to [info@canchecked.de](mailto:info@canchecked.de).



## General information

The display is a very sensitive device. One should act with extreme caution here. Any strong pressure on the housing or the display itself should be avoided.

CANchecked assumes no liability for this conversion or for damage during the conversion or during operation. The manual was created to the best of our knowledge and belief.

The conversion time is about 1.5h for an experienced screwdriver.

## Required tools

- Nippers
- Crosshead screwdriver
- Assembly tool (sold separately)

## 1) Uninstalling the fairing

In the first step, remove the armrest in the center console by pulling it upwards.

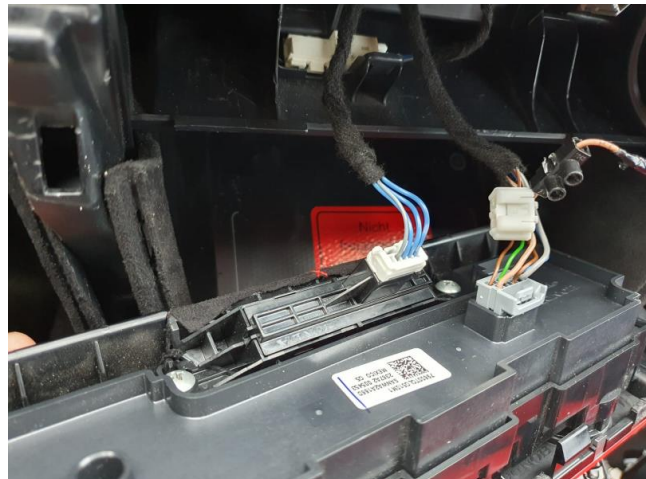


In the second step, the side panel around the gear knob must be dismantled. To do this, please pull it upwards.

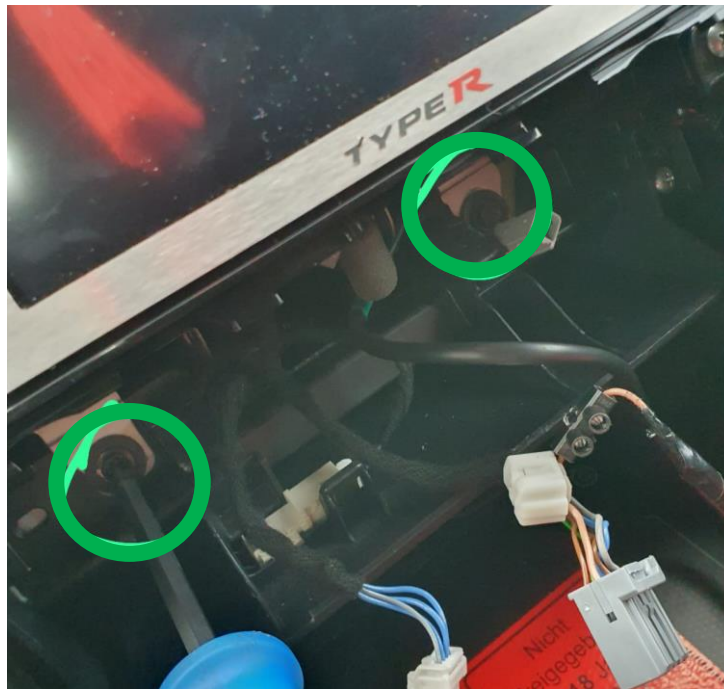




Now the ventilation unit can be grabbed on both sides and pulled towards you. The plugs on the back can then be carefully removed and the ventilation unit set aside.



Now the two screws holding the screen can be loosened:



After the screws are loosened, the screen can be grabbed left and right and pulled out of the shaft vigorously. Again, please remove all rear plugs. Then the fairing can be carefully pulled towards you.

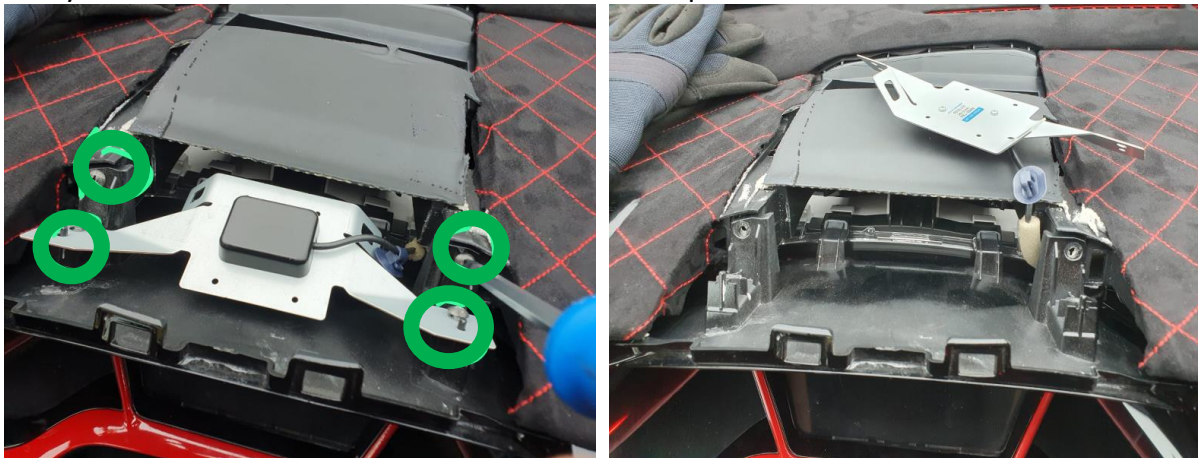


Once this is done, you can start levering up the speedometer cover in the middle and then pulling it towards you.





Then you have to loosen the marked four screws and place the sensor on the dashboard.



Now dismantle the fairing under the steering wheel by pulling it towards you. Don't forget to unplug the plugs on the left side and the plug and hose on the right. Then you can pull the hood side panel away to the left.



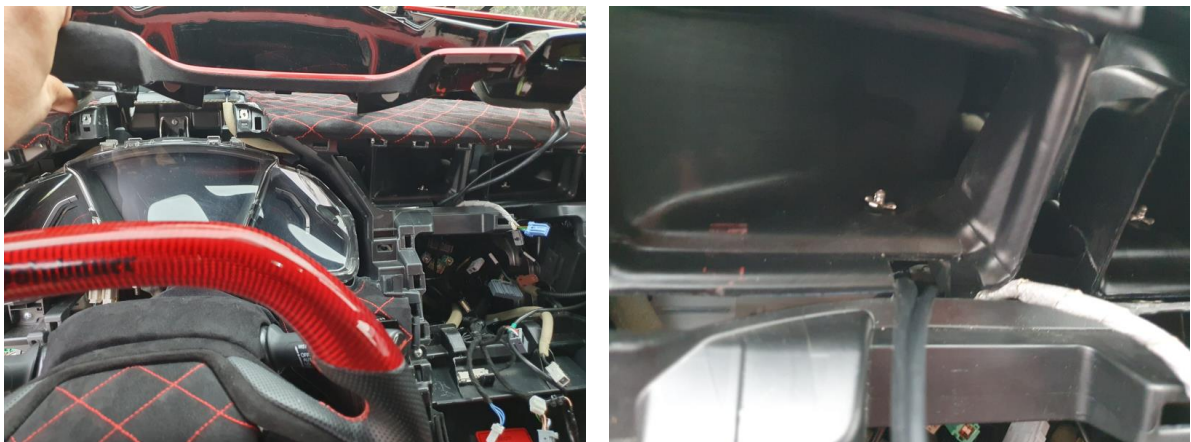
Once you are ready, you can now carefully pull the speedometer cover with the ventilation unit piece by piece towards you.





Pull out the cover so that you can release the rear plug for the hazard warning light switch. If you have solved this, you can remove the aperture completely.

Now the OBD cable must be routed from the socket through the dashboard towards the ventilation nozzle. As well as the USB cable can be routed from a position of your choice (we recommend access through the side cover of the dashboard) to the ventilation nozzle. For optimum later fit, a small corner for cable entry must now be cut out of the vehicle-side ventilation duct.



The red cable of the OBD connector must be wired to the fuse adapter in a slot with ignition plus.



## 2) Prepare the panel for assembly.

Next, loosen the three marked screws and can then pry out the ventilation grilles.



Now the slats have to be removed from the ventilation. To do this, these must be pulled out to the front.



Now you can run the cables from behind through the slats and plug them into your data display. And push it into position.



Now, before you put everything back together in reverse order, you can briefly switch on the ignition and check the display for function. If this is given you can complete the vehicle and are ready.

We hope you have as much fun with your CANchecked display as we do. If you have any questions, please feel free to contact [info@canchecked.de](mailto:info@canchecked.de) by e-mail.

We also have a support group on Facebook where other customers can help and share their experiences:

<https://www.facebook.com/groups/CANcheckedSupport/>